

Why Engage in a CPEP Education Plan?



Benefits of a CPEP Education Plan

Over the past 30 years, over 500 clinicians in more than 30 specialties have successfully completed or are actively working on education plans designed by CPEP. These plans fit into a clinician's busy life, allowing them to serve the needs of their patients while working to improve their clinical knowledge and skills.

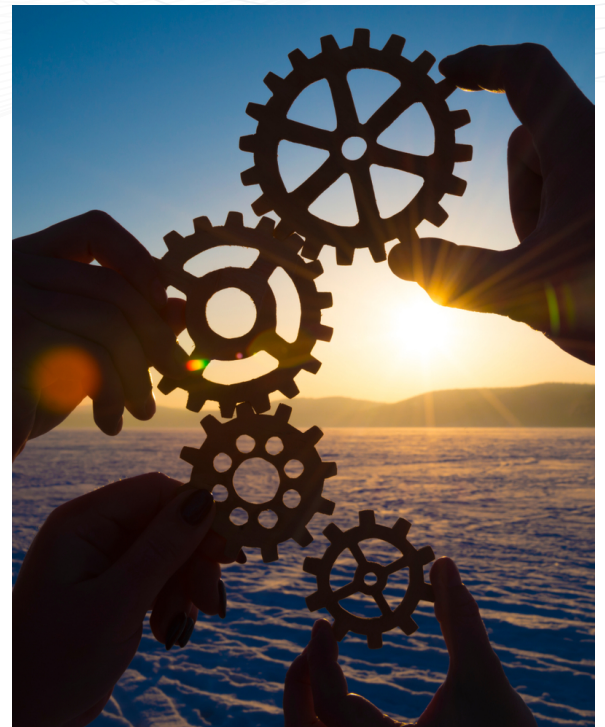
CPEP's education program can be a significant help to clinicians looking to polish their clinical performance – a statement validated by a peer-reviewed study in the Journal of Medical Regulation. A team of physicians reviewed 2,073 charts submitted by participants in CPEP's Practice Monitoring Program (PMP). One group of PMP participants completed CPEP's assessment and education program prior to monitoring. The second group went straight into monitoring without assessment or education.

In this retrospective review, charts submitted by CPEP assessment and education "alumni" were 5.49 times less likely to demonstrate care that did not meet accepted standards than those submitted by physicians who went into monitoring with no assessment or education.

What's involved in a CPEP Education Plan?

CPEP Education Plans often include, but are not limited to, the following:

- Monthly meetings with a preceptor*: During these meetings, participants and their preceptors will review patient cases via chart reviews and engage in hypothetical patient discussions to reinforce key take-always from recent educational activities completed by the participant.
- Regular meetings with a CPEP Associate Medical Director, including additional chart reviews and helpful feedback and coaching regarding the participant's progress.
- Review and study of evidence-based literature in collaboration with an educational Preceptor and the Associate Medical Director.
- Participation in Accredited Continuing Medical Education activities that apply to the clinical topics identified as areas of educational need.



*Preceptors are chosen by the participant and must be vetted and approved by CPEP. Direction and guidelines for the process of Preceptor Approval will be outlined in the Education Plan. Any honorarium paid to a preceptor is the responsibility of the participant.

Continued

Point of Care Experience

Some CPEP Education Plans recommend/require a period of oversight through a ***Point of Care Experience***. The Point of Care Experience is intended to allow appropriately graduated levels of independence through periods of observation and oversight as the participant addresses immediate practice needs.

This experience may include initial direct observation progressing to review of patient evaluation and treatment plans prior to patient discharge, intensive chart reviews, and close review of controlled substance prescribing, and/or other elements of oversight.

How long is a CPEP Education Plan?

The duration of a CPEP Education Plan is driven by two factors:

1. The depth of educational needs identified in the CPEP assessment – on average, participants with broader or deeper educational needs take longer than those with more limited educational needs.
2. The amount of time and effort a participant can devote to the plan on a consistent basis – generally dependent upon each participant's life and professional circumstances.

On average, participants take between nine and 18 months to complete their Education Plans.

What does a CPEP Education Plan Cost?

- The fee for Education Plan Development ranges from \$2,000 - \$2,750 depending upon the specialty and the need for a Point of Care Experience.
- The fee for Education Plan Monitoring ranges from \$750 - \$950 per month depending upon the specialty.

**For more information,
visit the CPEP website at <http://www.cpepdoc.org>
or call 303-577-3232**